

**Central Brass Company, Inc.**  
3325 S. Garfield Ave.  
Commerce, CA 90040  
(800) 321-8630  
www.centralbrass.com

**Tools:**



Adjustable Wrench



Plumbers Putty



Teflon Tape



Rags



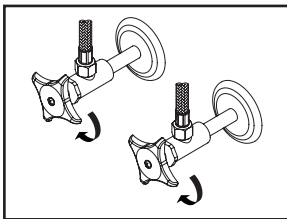
## Model Number: 1177, 1178 Series

**Warnings and Notes:**

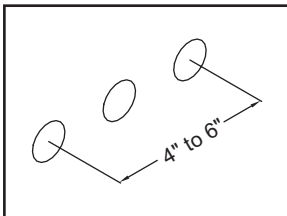
Check with local plumbing code requirements before installation.  
This product should be installed by a local listed plumber.  
**Do not use plumbers putty on threads.**

## Installation Steps:

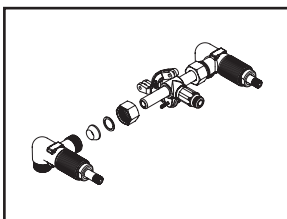
### Two Handle Wall Mount Faucet



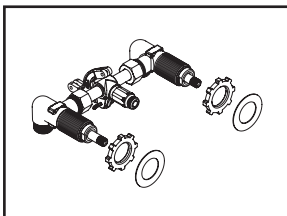
(1) Shut off water supplies. Remove old faucet. Clean mounting surface in preparation for new faucet.



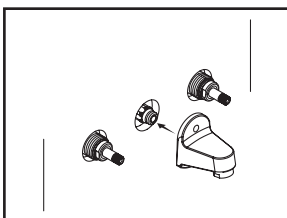
(2) Measure installation distance. This faucet can be installed on center to center distance from 4" to 6". For 4" centers installation cut off 3/8" from each end of center tee



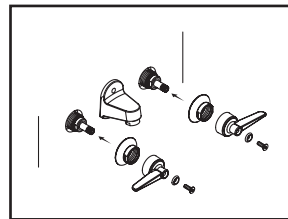
(3) Assemble cold valve body. Place coupling nut, brass washer and rubber cone washer with larger end towards the center tee. Tighten the coupling nut to cold valve body. Install rocker arm to center tee with the help of cotter pin. Install hot valve body same way.



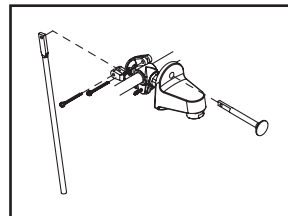
(4) Install locknuts down full length of each valve body. Place gaskets on valve bodies.



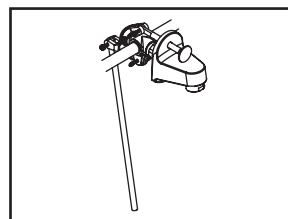
(5) Slide the assembly through mounting holes. Apply plumbers putty to the back of the spout. Thread spout to the center tee. Ensure o-ring does not get nicked.



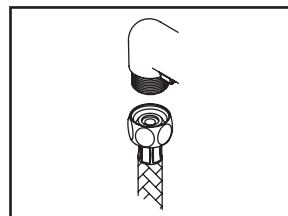
(6) Apply plumbers putty underneath of escutcheons. Thread escutcheons on to the valve bodies. Install handles to the valve bodies with the help of screws. Adjust locknut of both sides from the back of mounting hole to fix the valve bodies on the mounting surface



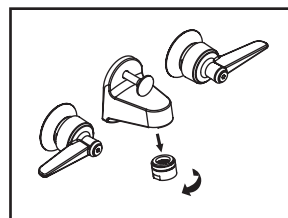
(7) Install Pop-up Rod and lower pull rod to the rocker arm with the help of cotter pins



(8) Check when pop-up rod is pulled the lower pull rod moves properly.

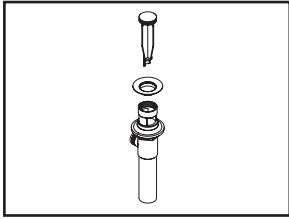


(9) When using stainless steel braided faucet supply hose; this faucet requires one end of the supply hose to have a 1/2" female IPS connection. The other end of this supply hose must match the thread on the water supply valve under your sink. Once you've identified the required size, carefully follow the manufacturer's installation instructions for each hose.

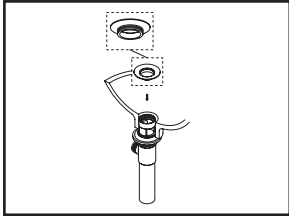


(10) Important: After installation is complete, remove aerator. Turn water supplies on and allow both hot and cold water to run at least one minute each. While water is running, check for leaks. Turn off water and replace aerator.

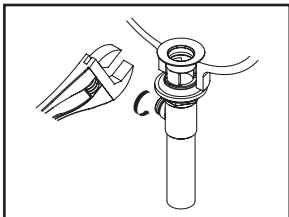
## Pop-up Drain Installation:



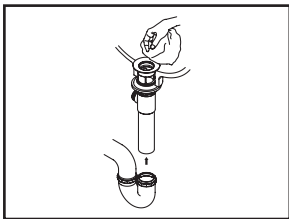
(1) Remove pop-up flange from body



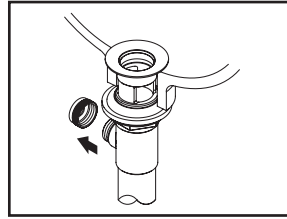
(2) Place a ring of plumbers putty on the bottom of flange.



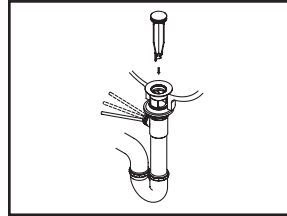
(3) Insert pop-up flange through drain hole and attach flange to body. Use Teflon tape to thread tail piece to Pop-up drain body. Ensure the pop-up outlet faces towards the back of the sink. Tighten the locknut securely with a wrench. Do not overtighten.



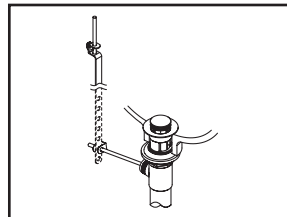
(4) Remove the excess plumbers putty. Connect the trap (check manufacturer's instructions for installation).



(5) Remove pivot rod nut from pop-up body, ensure the washers is in place, insert pivot rod, tighten pivot rod nut back to pop-up body.



(6) Push pivot rod down, insert drain plug carefully. Test to ensure drain plug works properly.



(7) Connect lift rod strap to pivot rod by using clip. Tighten the thumbscrew to connect lift rod strap to pop-up lift rod.