

Conex | Bänninger

>B< Press

>B< Press XL



 >B< Press Water (1/2" to 4")

>B< Press fittings are quick and easy to install and are available in lead free copper and red brass. This flame free range is designed with an innovative 3-point press system, with >B< Press XL featuring a stainless steel grip ring for additional strength. Both ranges have a leak before press indicator to ensure a secure, permanent leak free joint that is suitable for multiple applications.

Benefits

- Quick and easy to install, saving on labor costs.
- Permanent, flame-free connection - no hot works permit required.
- Suitable for use with hard, half-hard and soft copper tubes to ASTM B88-16.
- Tested and approved by national and international standard authorities.





- Leak before press indicator.
- Twenty five-year limited warranty. For full terms and conditions visit www.conexbanninger.com/US.
- Comprehensive range of fittings - sizes from 1/2" - 4".
- 3-point press safety feature for added security. (1/2" - 2" only).
- Stainless steel grip ring for additional peace of mind (2 1/2" - 4").
- Compatible with various approved press tools and jaws.
- Manufactured using high quality materials and standards.
- No soldering, brazing or weld gas consumables required.
- Can be installed in concealed locations.
- Anti-microbial materials - copper and brass.



Conex | Bänninger

>B< Press



The quick and easy-to-use fitting with a permanent 3-point press joint for water applications.

Conex Bänninger has an established history in press fit solutions, having first introduced the >B< Press fitting 20 years ago.

The fitting is exceptionally easy-to-use, making it **faster-to-fit** than traditional fittings, and often the fitting of choice for large scale commercial contracts. You can have absolute confidence in its **secure 3-point press joint**, and the unique **leak before press indicator** feature which helps you to identify unpressed joints in large applications.



Faster-to-fit

Labor costs can be cut significantly when connecting with >B< Press. The >B< Press fitting system eliminates the need for solder, adhesives or other additional jointing materials. Eight simple steps is all it takes to achieve a permanent, leak-proof joint.

A secure 3-point press joint

The >B< Press design has the advantage of a 3-point press profile; two hexagonal mechanical presses on either side of the bead, and one cylindrical press on the bead containing the O-ring. When pressure is exerted through the press tool, the O-ring material compresses itself to form a permanent, leak-proof joint, as part of the cold forming process.



>B< Press contour

Leak before press indicator

An additional safety feature of the >B< Press fitting range is the leak before press indicator. The EPDM O-ring housed in the bead has been engineered to cause a visible leak at very low initial test pressures (1.5 PSI to 85 PSI) ensuring a fail-safe installation. Available in sizes from 1/2" - 2".



Patented >B< Press O-ring

Simple-to-fit and flame-free

>B< Press is designed with a lead-in edge, ensuring the pipe is parallel to the fitting on insertion, preventing

damage to the O-ring. The joint is then made using a mechanical press tool to connect the fitting to the tube. >B< Press fittings are compatible with various tools and jaws. For more details, please view our >B< Press compatibility list on our website.

A range for every application

>B< Press fittings can be used in a wide range of commercial and domestic applications such as hot and cold water services, along with heating and cooling systems which include chilled water systems. For further information on applications please refer to the technical brochure on the website.

Anti-microbial materials

Copper has been long known for its protective anti-microbial properties. Its resistance to corrosion and oxidation makes >B< Press ideal for use in drinking water applications.

Tube compatibility

>B< Press fittings will join hard, half-hard and soft copper tube that are manufactured in accordance with ASTM B88-16.

Size availability

>B< Press fittings are available in sizes 1/2" - 2".

Temperatures and pressures

Working temperatures for >B< Press fittings range between -20 °F to 230 °F with an operating pressure of 230 psi.

Twenty Five-Year Limited Warranty

When professionally installed and used in accordance with >B< Press installation instructions, >B< Press is covered by a twenty five-year limited warranty.

For full terms and conditions visit www.conexbanninger.com/US

Standards and approvals

>B< Press fittings are IAPMO approved and compliant with NSF/ANSI 61 drinking water systems and NSF/ANSI 372 lead content components.

Visit www.conexbanninger.com/US for other approvals.

Installation guidelines

1



Cut the tube to length

2



Deburr the tube internally and externally

3



Mark the tube to our recommended length depending on the size of the fitting

4



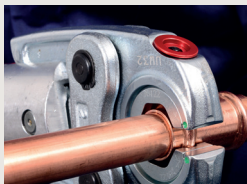
Check O-ring is positioned correctly with no swarf or debris

5



Assemble fitting with the tube and check depth mark is in correct position

6



Position the fitting into press jaw and press once

7



Press all ends of fitting

8











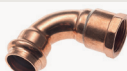
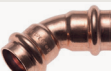
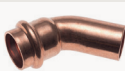





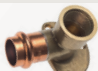



Completed joint



Installation demonstrations videos are also available on our youtube channel
www.youtube.com/user/ConexBanninger

Product range

For further details on our full range please visit: www.conexbanninger.com

Straight Coupler  PA5270 From: 1/2" To: 2"	Reduced Straight Coupler  PA5240 From: 3/4" x 1/2" To: 2" x 2 1/2"	Slip Coupler  PA5270S From: 3/4" To: 2"	Female Straight Connector  PA5270G From: 1/2" x 1/2" To: 2" x 2"
Male Straight Connector  PA5243G From: 1/2" x 1/2" To: 2" x 2"	90° Bend  PA5002 From: 1/2" To: 2"	90° Street Bend  PA5001 From: 1/2" To: 2"	Fitting Reducer  PA5243 From: 3/4" x 1/2" To: 2" x 1 1/2"
90° Bend with Male Thread  PA5001G From: 1/2" To: 2"	90° Elbow with Female Thread  PA5090G From: 1/2" To: 2"	45° Obtuse Elbow  PA5041 From: 1/2" To: 2"	45° Obtuse Street Elbow  PA5040 From: 1/2" To: 2"
Tee - Equal  PA5130 From: 1/2" To: 2"	Tee - Reduced Branch  PA5130 From: 3/4" x 3/4" x 1/2" To: 2" x 2" x 1"	Tee - Reduced End and Branch  PA5130 From: 3/4" x 3/4" x 1/2" To: 2" x 2" x 1 1/2"	Tee with Female Threaded Branch  PA5130G From: 1/2" To: 2" x 2" x 1 1/2"
Stop End  PA5301 From: 1/2" To: 2"	Wall Plate Elbow  PA4471G From: 1/2" To: 3/4"	Crossover  PA5085 From: 1/2" To: 3/4"	Union  PA4340 From: 1/2" To: 2"
Male Union  PA4341G From: 1/2" To: 2"	Female Union  PA4340G From: 1/2" To: 2"		

Conex | Bänninger

>B< Press XL



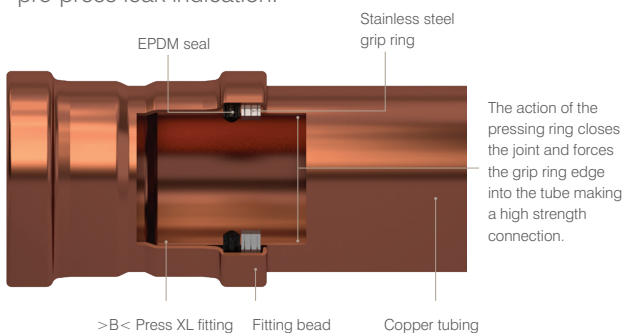
The easy-to-use large diameter press system with an internal grip ring for additional strength.

>B< Press XL fittings are quick and easy to install and are available in copper. This flame free range is designed with a stainless steel grip ring for additional strength. Furthermore it features a leak before press indicator to ensure a secure, permanent leak free joint that is suitable for multiple applications.



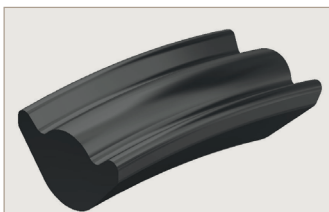
Product features

>B< Press XL has only two internal parts, the grip ring and the seal. Both parts have an internal diameter larger than the tube, which allows for easy tube insertion and pre-press leak indication.



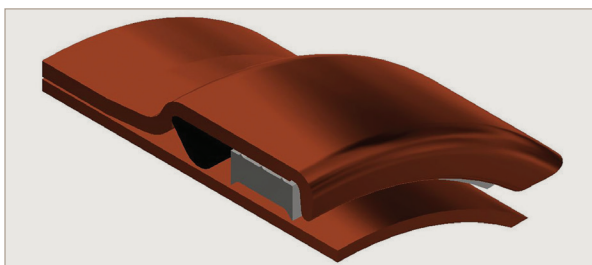
Stainless steel grip ring

Complete diameter grip ring ensures all round equal grip on the tube diameter, and an even seal compression between tube and fitting after pressing.



Seal design

Triple point seal on the pressed fitting body counters any pressing distortion and gives greater seal contact area on the tube. Self-setting seal area for correct function of seal. Seal security and longevity increased as a result.



Simple-to-fit and flame-free

>B< Press XL is designed to allow for easy tube insertion. The joint is made using a mechanical press tool to join the fitting and tube together forming a secure joint. No need for brazing and soldering materials; saving time and money. >B< Press XL fittings are compatible with various tools and jaws. For more details, please view our >B< Press compatibility list on our website.

Leak before press indicator

This is achieved by all the internal components having a larger diameter than the tube, allowing the flow of water to pass over the tube at low pressures (1.5 – 85 PSI) ensuring a fail-safe installation. Available in sizes from 2 1/2" – 4".

Tube compatibility

>B< Press XL fittings will join hard and half-hard copper tube that are manufactured in accordance with ASTM B88-16.

Size availability

>B< Press XL fittings are available in sizes 2 1/2" to 4".

Temperatures and pressures

Working temperatures for >B< Press fittings range between -14 °F to 230 °F with an operating pressure of 230 psi.

Operating temperatures

Working temperatures for >B< Press XL fittings range between 14 °F and 230 °F.

Twenty Five-Year Limited Warranty

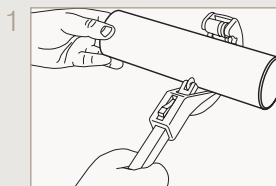
When professionally installed and used in accordance with >B< Press XL installation instructions, >B< Press XL is covered by a twenty five-year limited warranty.

For full terms and conditions visit
www.conexbanninger.com/US

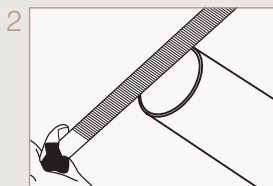
Standards and approvals

>B< Press XL fittings are approved to ASME B16.51.
Visit www.conexbanninger.com/US for other approvals.

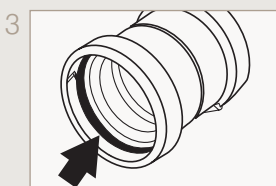
Installation guidelines



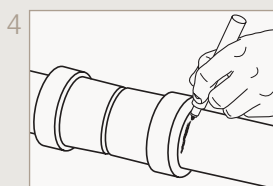
Use a pipe cutter to cut the tube. The tube ends should be clean and free from scratches.



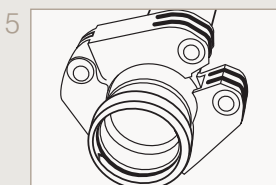
Make sure that the internal and external tube end is free from burrs or sharp edges. Wipe the tube end clean to avoid damaging the seal on tube insertion.



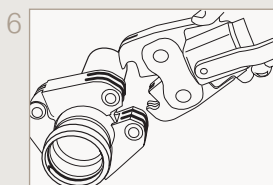
Check seal for correct placement, free of damage or any ingress of debris.



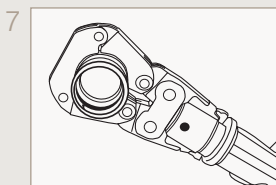
The tube must be fully inserted to the tube stop. Marking insertion depth will ensure that any tube movement is detected.



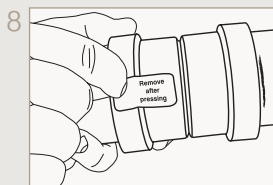
Using the appropriate size pressing ring, open, locate on the fitting bead and close the pressing ring.



Locate the actuator onto the aperture of the pressing ring. Check for any tube movement prior to pressing.



Depress and hold the trigger until the press cycle of the tool is completed. Keep hands clear of the press actuator.



Remove the actuator and press ring from the tube. Remove the label to indicate the joint is pressed and complete.

Product range

For further details on our full range please visit: www.conexbanninger.com

Straight Connector



PA5270

From: 2 1/2"
To: 4"

Repair Coupling



PA5275

From: 2 1/2"
To: 4"

Fitting Reducer



PA5243

From: 2 1/2" x 1"
To: 4" x 3"

Male Threaded Straight Connector



PA5243G

From: 2 1/2" x 2 1/2"
To: 4" x 4"

Threaded Female Straight Connector



PA5270G

From: 2 1/2" x 2 1/2"
To: 4" x 4"

90° Elbow



PA5002

From: 2 1/2"
To: 4"

90° Street Elbow



PA5001

From: 2 1/2"
To: 4"

45° Elbow



PA5041

From: 2 1/2"
To: 4"

45° Street Elbow



PA5040

From: 2 1/2"
To: 4"

Tee - Equal



PA5130

From: 2 1/2"
To: 4"

Tee - Reduced Branch



PA5130

From: 2 1/2" x 2 1/2" x 1 1/2"
To: 4" x 4" x 1 1/4"

Tee with Female Threaded Branch



PA5130G

From: 2 1/2" x 2 1/2" x 2"
To: 4" x 4" x 3/4"

Stop End



PA5301

From: 2 1/2"
To: 4"

Flange



PA5230B

From: 2 1/2"
To: 4"



IBP Group LLC, 24 Cathedral Place, Suite 400 St Augustine, FL 32084

Office phone number: 904-217-4970

Office fax: 904-460-2603

Email: salesUSA@ibpgroup.com, Website: www.conexbanninger.com

Conex Banninger products are approved by numerous Standards Authorities and Certification Bodies. This is a representation of the full range from Conex Universal Ltd. IBP trademarks are registered in numerous countries. More information online at: www.conexbanninger.com