



BASICS®



MTI BASICS® tubs are the perfect solution when needs are more simple and desires more modest. This selection includes a variety of tubs in the most popular shapes and sizes, and at a very affordable price.

Production of your tub is quick: drop-in soakers and whirlpools are ready to ship in 5 business days; air baths and freestanding models in 7.

And just because the project has a thin budget, it doesn't mean that you have to sacrifice craftsmanship and quality. MTI BASICS tubs are handcrafted, water-tested and quality-inspected.

MTI BASICS® Freestanding Models



MBXFSX5832A
58" x 32" x 22"
Features an integrated deck for mounting faucetry and is designed for above-floor rough-in.



Above-floor rough-in shown with optional quick-connect drain.

FREESTANDING MODELS



MBOFS6636
66" x 37" x 22"

Also available with a shallower bowl for above-floor rough-in.
MBOFS6636A
66" x 37" x 22"



MBOFSX6636
66" x 37" x 22"
Features an integrated deck for mounting faucetry.

Also available with a shallower bowl for above-floor rough-in.
MBOFSX6636A
66" x 37" x 22"

FREESTANDING MODELS



MBCRFS6632
66" x 32" x 20"



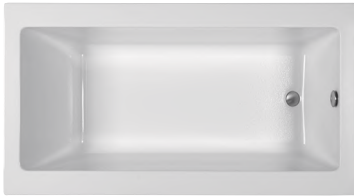
MBRFSX6636
66" x 36" x 23"
Features an extended deck
for mounting faucetry.

Available with a shallower bowl
for above-floor rough-in.
MBRFSX6636A
66" x 36" x 23"

MTI BASICS® Rectangular Drop-in Models



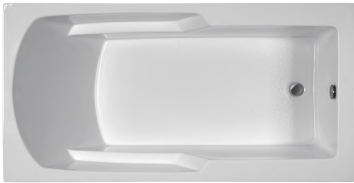
MBCR6632



MBCR6032 60" x 32" x 20"
MBCR6632 66" x 32" x 20"
MBCR6636 66" x 36" x 21"
MBCR7242 72" x 42" x 20"
Above models can also
be undermounted.



MBCR7242C 72" x 42" x 22"
Can also be undermounted.



MBRR6030E 60" x 30" x 17"
MBRR6032E 59" x 32" x 19"
MBRR6036E20 60" x 36" x 20"
MBRR6634E 66" x 34" x 20"
MBRR6630E 66" x 30" x 19"



MBRR7136E 71" x 36" x 19"

RECTANGULAR DROP-IN MODELS



MBRO6042E



MBRO6042E 60" × 42" × 19"
MBRO7142E 71" × 42" × 19"
MBRO7236E 72" × 36" × 20"



MBRO7142C 71" × 42" × 19"

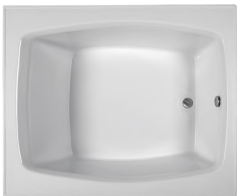


MBRO6036E 60" × 36" × 19"

RECTANGULAR DROP-IN MODELS



MBRX6048E



MBRX6048E
59" × 48" × 20"



MBRX7248E
71" × 47" × 20"

MTI BASICS® Corner Drop-in Models



MBOC6060



MBSC6060
59" × 59" × 19"



MBOC6060
59" × 59" × 21"

MTI BASICS® Oval Drop-in Models



MBODI7236



MBODI6036 60" × 36" × 19"
MBODI7236 73" × 36" × 23"



MBODI7042 69" × 42" × 20"



MBODI6042 60" × 42" × 22"

MTI BASICS® Integral-Skirted Models



MBISC6030 A/D 60" × 30" × 19" / 16"
MBISC6032 A/D 60" × 32" × 19" / 16"

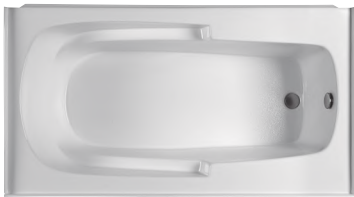
Both models available in two different heights:
◦ 19" height allows for an above floor rough-in (AFR)
◦ 16" height complies with ADA regulations (ADA)



MBIS7236 (shown) 72" × 36" × 21"
MBIS7242 72" × 42" × 21"



MBIS6030 (shown) 60" × 30" × 19"
MBIS6036 60" × 36" × 20"



MBIS6032 (shown) 60" × 32" × 19"
MBIS6042 60" × 42" × 20"



MBIS6030
Shown with non-removable panel for soakers.
This front skirt design above applies to the 6
MBIS models shown here.

CONSTRUCTION AND STANDARD FEATURES

All Baths

- Durable high-gloss cross-linked cast acrylic.
- White standard; biscuit upgrade.
- Bath reinforcement consisting of a thick layer of fiberglass / titanium / resin, plus 1/2" metal reinforcement on all sides of rectangular and corner tubs.
- Textured bottom meets ASTM F-462-1994 slip resistance.
- 2-year residential warranty. 1-year commercial warranty.

Additional For Whirlpools

- Fully-adjustable point-massage jets.
- 1-bhp whisper-quiet pump with silent air volume control.
- Left- or right-hand pump locations available on center drain and corner models.

Additional For Air Baths

- 3/4 bhp heated blower with automatic purge system that activates 20 minutes after use.
- 12 low-profile air jets are installed on the tub floor with color-matching air caps.
- Check valves in jets prevent water from entering air lines.
- Pre-leveled foam base.

Additional For Integral-Skirted Tubs

- Pre-Leveled Foam Support System for more efficient installation. No need to use additional bedding compound.
- Integral tile flange on 3 sides.
- Left- or right-hand drain configuration (must specify when ordering).
- Front panel is removable for whirlpools and air baths.

Freestanding Tubs

- Available as a soaker only.
- Can be configured with a Virtual Spout integrated high-flow tub filler.
- Access panel included to facilitate drain or Virtual Spout installation.
- Tub may also be specified without a panel.



Air jet cap



access panel



virtual spout

TUB OPTIONS



Inline Heater

650-watt heater maintains bath water temperature at 104°. Available for whirlpools, air baths* and soakers*.
*Requires a low-force, recirculating pump for operation.



Pre-Leveled Foam Base

High-density foam support is standard with air baths and pre-leveled frame systems. Adds 2"-3" to overall tub height, except for integral-skirted models.



Tile Flange

Chemically bonded to the tub, which ensures a water-tight seal between the top tub surface and surrounding wall area. Integral tile flange is also available on most models.



Pre-Leveled Frame System

Hardwood constructed frame simplifies the installation process. Includes high-density foam that supports the bottom of the pre-leveled bath. Shown with optional skirting.

Please note: Designer Collection tub options do not apply to BASICS tubs.

MTI BASICS® includes an assortment of kitchen sinks and shower bases. Manufactured in high-quality cross-linked cast acrylic, MTI BASICS sinks and shower bases are attractive, scratch- and stain-resistant and easy to clean.

This selection of products can help when the circumstances and applications are value-sensitive. You can get the function you need in a form you will like. Products shown include a 1-year residential and commercial warranty and are ready to ship within 3-5 business days.

MTI BASICS® Kitchen Sinks



MBKS230
33" × 22" × 8" (L / R)
Apron Style: Plain



MBKS231
33" × 22" × 8" (L / R)
Apron Style: Border



MBKS232
33" × 22" × 8" (L / R)
Apron Style: Vertical



MBKS233
33" × 22" × 8" (L / R)
Apron Style: Embossed



MBKS250
33" × 22" × 9"
Apron Style: Plain



MBKS251
33" × 22" × 9"
Apron Style: Border



MBKS252
33" × 22" × 9"
Apron Style: Vertical



MBKS253
33" × 22" × 9"
Apron Style: Embossed



MBKS240
25" × 22" × 9"
Apron Style: Plain



MBKS243
25" × 22" × 9"
Apron Style: Embossed



MBKS40
25" × 22" × 9"



MBKS30
33" × 22" × 8" (L / R)



MBKS60
42" × 22" × 10" (L) / 7" (C) / 8" (R)



MBKS50
33" × 22" × 9"

Available colors for all sinks: White, Bone, Biscuit, Black, Sterling Silver

MTI BASICS® Shower Bases



Center Drain



End Drain

Available Sizes:

MB3636CD 36" × 36" × 5"
MB4236CD 42" × 36" × 5"
MB4832CD 48" × 32" × 5"
MB4836CD 48" × 36" × 5"

MB4842CD 48" × 42" × 5"
MB4848CD 48" × 48" × 4"
MB6034CD 60" × 34" × 5"
MB6048CD 60" × 48" × 5"

Available Sizes:

MB6030ED 60" × 30" × 6"
MB6032ED 60" × 32" × 6"
MB6036ED 60" × 36" × 6"

Available colors for all shower bases: White, Biscuit

Please specify left- or right-hand drain location when ordering.

MTI BASICS® Walk-in Tub

There is a large, ever-growing segment of the American population, age 50 and over, who intend to remain in their homes for as long as they possibly can, living comfortably and independently.

This phenomenon is known as "aging in place", and MTI's extensive product range can fully support this, offering a broad selection of Universal Design bathroom products that can accommodate the needs of all household members with versatility and style.

Over time, however, needs may change and requirements may become more specific, such as those resulting from mobility factors. Should this need arise, MTI's Walk-In Tub is designed to sensitively accommodate those who are mobility-challenged.

- MTI BASICS® Walk-In Tub is fully featured:
- with a welded steel frame with adjustable leveling "feet" for stability;
 - slip-resistant textured bottom;
 - 2 acrylic grab bars for security;
 - fast drain for convenience;
 - and a light-weight easy-to-latch door for ease of operation.

Measuring 52" x 30" x 38", the Walk-In Tub is available with optional acrylic end panels or extension panel to finish-off a full 60" width opening. Of course, you can also do a custom installation such as the one shown above, limited only by your imagination.

The Walk-In Tub can also be ordered with high-quality hot and cold high-flow filler valves with handles and a Virtual Spout high-flow tub filler, eliminating the potential obstacle of a filling spout. Also included with this package is a hand-held shower with diverter. And very importantly, it's available as a soaker, air bath or whirlpool, with an optional inline heater available for all three.



MBW5030 52" x 30" x 38"



Shown as a left-hand drain configuration with valve package and optional extension panel to fit 60" openings. NOTE: Please specify left- or right-hand drain location when ordering.

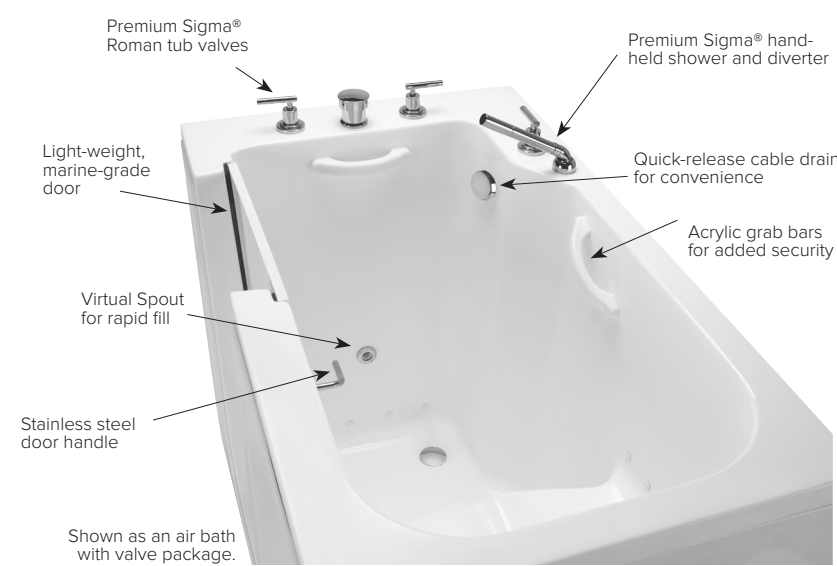


Inside view of tub.

For increased bather comfort, MTI's Radiance® tub surface heating system may be added. This unique feature uses radiant heat to warm the seat and backrest of the tub before, during and after the bath.

So if it is a walk-in tub that is needed, MTI goes beyond with the right product and the right features, at the right price. And, MTI BASICS Walk-in Tubs ordered in any configuration are ready to ship within 7 business days.

MTI BASICS® WALK-IN TUB CONSTRUCTION AND FEATURES



Soaker

- Constructed with cross-linked cast acrylic and multiple layers of marine-grade gelcoat with a backing of fiberglass / titanium / resin.
- Available colors are white and biscuit.
- Stainless steel structural frame with 6 leveling feet.
- Front removable acrylic panels for equipment access if necessary.
- Left- or right-hand drain location (must specify when ordering).
- Light-weight marine-grade door with easy-to-latch stainless steel hardware.
- 2 acrylic grab bars for security.
- Quick release cable drain included in chrome, plus door safety drain.
- 2-year residential warranty, 1-year commercial warranty.

Whirlpool - includes all of the soaker features, plus:

- Six fully-adjustable point-massage jets.
- 1-bhp whisper-quiet pump with silent air volume control.

Air Bath - includes all of the soaker features, plus:

- Twenty low-profile air jets are installed around the side walls of the bathing well with color-matching air caps. Each jet has an independent check valve to prevent water and residue from entering the air lines.
- 3/4-bhp heated blower with automatic purge that dries the air jets 20 minutes after use.

Combo - includes all of the soaker, whirlpool and air bath features.

THE PACKAGES TO THE LEFT ARE AVAILABLE WITH EITHER OR BOTH OF THE FOLLOWING:

Factory-Installed Valves

- Virtual Spout high-flow tub filler with in-wall backflow prevention device. Eliminates potential obstacle of a filling spout for mobility-challenged individuals. Available in chrome finish.
- Premium Sigma® Roman tub valves with deck-mounted hand-held shower and diverter valve. Available in chrome finish.

Radiance®

- Radiance® is a tub surface heating system designed to warm the interior surface of the tub.
- Radiance utilizes electric heating grids for the backrest area and seat of the tub. Grids are integrated in the tub structure.
- Low-voltage design. Uses energy equivalent to a standard light bulb. Designed to remain on at all times to ensure a warm surface during entry and throughout the bathing process.

WALK-IN TUB OPTIONS

- Inline heater
- Tile flange
- Acrylic end panel
- Extension panel to accommodate a 60" opening

Our Culture



J.C. HENRY
– OUR FOUNDER

J.C. Henry founded our company in 1988. He was a self-made man, a driven entrepreneur and resourceful in developing unique manufacturing processes still used today.

Against sound advice, he started a company in the challenging financial climate of a time when the interest rate was over 20% and his own age was nearing 60. This spirit of risk-taking was inspirational and integral to MTI's culture. He relentlessly pursued the highest quality of product as the only acceptable outcome.

KATHERINE ADAMS
– OUR CEO

In 1998 J.C. chose his successor, our CEO Kathy Adams. Building on J.C.'s legacy of the highest quality products, Kathy applied her business background and brought a new focus on superb award-winning designs to establish MTI as the luxury brand it is today.

The nucleus of MTI's thriving culture is dedicated individuals who love what they do. Kathy is the educator who defines an MTI leader as one who enables others to succeed.



NEXT CHAPTER
- EMPLOYEE OWNERSHIP

We are honored and humbled to be chosen numerous times as one of the top places to work in Atlanta.

When J.C.'s health deteriorated and an acquisition deal fell through in 2001, MTI employees invested their 401k savings and refinanced their homes to purchase the company from J.C. so that we could continue. Since then MTI has been an employee-owned company, which is a rare occurrence in today's business world.

It is not uncommon at MTI to have many families working together and many employees working more than 10 years with us. We strive to build a strong community within MTI and our neighborhoods.

CULTURE OF EMBRACING CHANGE LEADS TO INNOVATION

By consistently listening to the market, and embracing change, MTI thrived. MTI is the first company in the USA to launch a full product line in Engineered Solid Stone®. Some of our most important innovations include the most hygienic air bath systems and patents on the Fill-Flush® cleaning system and Gentle Jet® laundry system. MTI was also a leader in moving the industry to be design-driven and, through its Woodward Mill House, created the most creative, exciting and experiential training program in the industry.

AWARDS

MTI has received more than 100 awards for design excellence and product innovation with Russell Adams as our Chief Design Officer and President. The common thread within the design team's philosophy is "design with purpose". More than creating products that are merely high in design aesthetics, the design team maintains a focus on creating products that will satisfy the needs of people and enrich their lives.

A PASSION FOR CUSTOMER SATISFACTION

Every single call to MTI is answered by a real person – our Customer Service representatives are delighted to help you and to make sure that all your needs are met before, during and after the sale.

THE 3 Rs OF MTI

Respect
Responsibility
Resourcefulness

- | | |
|---------------------|---------------------------|
| Humility | Creative innovator |
| Thankfulness | Sense of fun |
| Loyalty | Team player |
| Hard working | A sense of family at work |
| Passionate | Ethical |
| Respectful listener | Fair |
| Embracer of change | Exceptional communicator |
| Informed risk taker | Flexible |



Made in the USA

MTI Baths
670 North Price Road
Sugar Hill, GA 30518
p: (800) 783-8827
f: (800) 438-8827

mtibaths.com

© Copyright 2017 by MTI Baths, Inc.
Modification Rights Reserved. 0519
Printed in the USA on chlorine-free paper.